



MOUNTAIN SHADOWS
An Acclaimed Desert Destination



Where the great gather

A RESORT IN THE HEART OF PARADISE VALLEY.

Your attendees will love our one-of-a-kind setting with dramatic mountain views. Take in the natural desert beauty from this serene setting, where the stars literally shine brighter. Mountain Shadows is adjacent to spectacular trails, renowned dining, and less than 10 minutes from the plethora of shopping and entertainment Old Town Scottsdale has to offer. After your event, savor seasonal fare at Hearth '61, enjoy a swim at The Citizens Club pool or tee off at The Short Course—our own 18-hole, par-3 golf course.





MOUNTAIN SHADOWS LAWN

The *venues*

MODERN DESIGN. DESERT BEAUTY.

A unique and inspired alternative to typical business hotels, Mountain Shadows helps you host exceptional meetings and special events. With magnificent spaces that highlight Paradise Valley's natural landscape, your guests will be excited to attend.



PARADISE BALLROOM



PARADISE TERRACE



CHOLLA BOARDROOM



HEARTH '61 LIVING ROOM + COMMUNITY ROOM

BALLROOMS

Swathed in warm tones of gray and light blue with modern chandeliers, the Paradise Ballroom exudes sophistication. A wall of retractable glass leads you out to the Paradise Terrace, which features awe-inspiring views of Camelback Mountain. Combine the ballroom, terrace and pre-function space to flow seamlessly through 11,000 square feet of indoor/outdoor area.

OUTDOORS

Our outdoor venues capture the dramatic scenery like no other. With options like the ballroom terrace and the Mountain Shadows Lawn, give your gathering a stunning backdrop of native plant life and iconic mountain views. Our Camelback Overlook deck is the ultimate rooftop venue in Arizona. This one-of-a-kind space combines sleek design with the natural desert beauty of Camelback Mountain, making it an ideal opening-night venue that will energize and inspire.

MEETING ROOMS

Our well-styled meeting spaces feature sliding glass doors, offering an abundance of natural light. Each room spills onto the Paradise Terrace or Mountain Shadows Lawn, both perfect spots for al fresco meals and breaks.

UNIQUE SPACES

At Mountain Shadows, you aren't limited to traditional meeting spaces. Make it memorable by hosting an event on Rusty's patio, poolside at The Citizens Club, at Hearth '61 or in the sunken Living Room and Community Room, two connected spaces that are simultaneously modern and cozy.

Capacity chart

SPACE	SQUARE FOOTAGE	SQUARE METERS	LENGTH & WIDTH	CEILING HEIGHT	BANQUET	CLASSROOM	CONFERENCE	RECEPTION	THEATER	U-SHAPE
-------	-------------------	------------------	-------------------	-------------------	---------	-----------	------------	-----------	---------	---------

BALLROOMS

Paradise Ballroom	4,346	404	82' x 53'	16'	360	260	—	435	500	124
Paradise Ballroom North	2,173	202	41' x 53'	16'	180	130	—	220	250	62
Paradise Ballroom South	2,173	202	41' x 53'	15'	180	130	—	220	250	62
Paradise Ballroom Pre-Function	3,354	312	88' x 25'+ 56' x 13'	13' 5"	200	—	—	350	—	—
Paradise Ballroom Pre-Function North	1,130	105	44' x 25'	13' 5"	200	—	—	100	—	—
Paradise Ballroom Pre-Function South	2,224	207	44' x 34'+ 56' x 13'	13' 5"	120	—	—	250	—	—

MEETING ROOMS

Mountain View Room	1,064	98	39' x 28'	11'	90	70	40	105	118	40
Valley Room	952	88	28' x 34'	14' 5"	80	66	32	95	106	35
Valley Room North	476	44	28' x 17'	14' 5"	40	33	16	45	53	18
Valley Room South	476	44	28' x 17'	14' 5"	40	33	16	45	53	18
Echo Room	546	51	26' x 21'	12' 5"	50	38	22	55	61	26
Cholla Boardroom	264	25	22' x 12'	12' 5"	—	—	15	—	—	—
Canyon Boardroom	264	25	22' x 12'	12' 5"	—	—	15	—	—	—

SPACE	SQUARE FOOTAGE	SQUARE METERS	LENGTH & WIDTH	CEILING HEIGHT	BANQUET	CLASSROOM	CONFERENCE	RECEPTION	THEATER	U-SHAPE
-------	-------------------	------------------	-------------------	-------------------	---------	-----------	------------	-----------	---------	---------

OUTDOORS

The Citizens Club Pool	9,803	910	210' x 68'	—	200	—	—	500	—	—
The Citizens Club Pool North	6,438	598	131' x 68'	—	150	—	—	400	—	—
The Citizens Club Pool South	3,365	313	79' x 68'	—	50	—	—	100	—	—
Mountain Shadows Lawn	4,426	411	140' x 41'	—	380	—	—	450	—	—
Mountain Shadows Lawn North	2,221	206	77' x 41'	—	185	—	—	225	—	—
Mountain Shadows Lawn South	2,205	205	63' x 35'	—	185	—	—	225	—	—
Camelback Overlook	4,140	385	69' x 60'	—	345	—	—	420	—	—
Paradise Terrace	3,350	311	79' x 44'	—	280	—	—	350	—	—

UNIQUE SPACES

Rusty's	3,990	370	76' x 40'+ 38' x 25'	—	330	—	—	400	—	—
Rusty's Patio	3,040	282	76' x 40'	—	250	—	—	300	—	—
Rusty's Clubhouse	950	88	38' x 25'	10'	40	—	—	70	—	—
Hearth '61 Restaurant Patio	2,444	177	80' x 30' x 6"	—	140	—	—	200	—	—
Community Room	1,292	120	38' x 34'	11'	60	—	—	100	—	—
Community Room Patio	588	55	28' x 21'	—	30	—	—	60	—	—
Hearth '61 Private Dining	686	64	49' x 14'	9.5'	35	—	20	—	—	—
The Living Room	650	60	25' x 26'	11'	—	—	—	40	—	—
The Citizens Club Lounge	450	42	15' x 30'	9.5'	40	24	15	20	50	17



PENTHOUSE SOUTH MASTER

The *stays*

RELAX & REFOCUS

Serene guestrooms and suites give everyone in your group a chance to recharge. Beautiful views, full-service amenities and the best in contemporary design make for stays that turn into productive days.

Resort guestrooms & suites

Contemporary design is combined with stunning desert views and luxurious amenities to create the ultimate retreat. All accommodations feature plush bedding, custom furnishings and cocktail carts. Most guestrooms also feature floor-to-ceiling glass for abundant natural light, while premium guestrooms include private patios or balconies.

CABANA PREMIUM



SIGNATURE

DELUXE | 427 SQ. FT. | KING OR TWO QUEENS

PREMIUM | 427 SQ. FT. & 95 SQ. FT. PATIO | KING OR TWO QUEENS

Modern appointments and bold design set the tone for a well-styled retreat. Enjoy an open layout and a classic cocktail cart with signature recipes for a low-key night in.

CABANA PREMIUM

427 SQ. FT. & 160 SQ. FT. PATIO | KING

Check out the poolside scene at The Citizens Club from your private cabana patio. Concrete floors, high ceilings and geometric lighting create a bold, modern retreat.

GARDEN PREMIUM

427 SQ. FT. & 130 SQ. FT. TERRACE | KING

Luxuriate on your private ground-floor terrace. Floor-to-ceiling glass, high ceilings and concrete floors complement the iconic desert setting.



MOUNTAIN PREMIUM

436 SQ. FT. & 90 SQ. FT. PATIO | KING

Enjoy direct views of iconic Camelback Mountain. Lounge on your private balcony while watching the sun set and the colors shift.



IMMERSE PREMIUM

464 SQ. FT. & 62 SQ. FT. BALCONY | KING

End the day with a soak in a luxurious bathtub overlooking Camelback Mountain, then take in Arizona's delightful weather on your private, third-floor balcony.



CAMELBACK PRESIDENTIAL SUITE

1,123 SQ. FT. & (2) 633 SQ. FT. PATIOS | KING

This luxurious third-floor suite features a corner terrace that's perfect for afternoon cocktails overlooking Camelback and the surrounding mountains. Lounge in the well-appointed living room or de-stress in the spacious bathtub.

Luxury resort residences

Each residence suite boasts custom furnishings and finishes, as well as in-unit laundry, full kitchens, floor-to-ceiling glass and private outdoor spaces. For the ultimate indulgence, enjoy a private in-suite meal from our own Chef Charles Wiley.



PENTHOUSE LIVING ROOM



THREE-BEDROOM PENTHOUSE SOUTH 3,400 SQ. FT. & 530 SQ. FT. BALCONIES 3 BED/3.5 BATH

This is the pinnacle of luxury at Mountain Shadows. Five private decks offer stunning views, including a retractable wall of glass that opens to a private balcony. Make it a night in with the wet bar and wine fridge, watch a movie in the private theater or enjoy an intimate dinner.

RESIDENCE PREMIUM ROOM 427 SQ. FT. & 78+ SQ. FT. PATIO | KING OR QUEEN/QUEEN Unparalleled pool and mountain views inspire ultimate relaxation and personal renewal. Enjoy floor-to-ceiling glass and your own private patio.

STUDIO SUITE 1,000 SQ. FT. & 130–586 SQ. FT. PATIO | STUDIO/1 BATH Revel in a spacious studio residence with an open layout, floor-to-ceiling glass, thoughtfully designed furnishings, full kitchen and a private patio.

ONE-BEDROOM SUITE 1,000 SQ. FT. & 130–586 SQ. FT. PATIO | 1 BED/1.5 BATH A full kitchen and open views of the living area offer a spacious feel, while the master bedroom is the perfect place to rest easy. Take in the stunning views and abundant sunshine on your private patio or balcony.

TWO-BEDROOM STUDIO SUITE 1,500 SQ. FT. & 168–1,335 SQ. FT. PATIO | STUDIO + 1 BED/2.5 BATH Indulge with a suite that combines two private retreats, each with their own patio. The studio side features a full living space and kitchen, while the adjoining room features an additional bedroom and bathroom.

TWO-BEDROOM SUITE 1,600 SQ. FT. & 168–1,335 SQ. FT. PATIO | 2 BED/2 BATH Unwind in a luxurious flat that features ample living space, a fully stocked kitchen, a spacious master bedroom and a patio for entertaining. Another complete guestroom offers a private bathroom and access to a second outdoor space.



TWO-BEDROOM LOFT 1,700 SQ. FT. & 168–1,335 SQ. FT. PATIO | 2 BED/2.5 BATH Make yourself at home in the expansive, two-story living space. Cook delicious dishes in the fully equipped kitchen, then bask in the master bedroom's plush appointments—complete with a private deck.



THE SHORT COURSE

©2014 Dave Sonstem

The *activities*

GET OUT & EXPLORE.

Mountain Shadows' ideal location offers the peace of a retreat that's worlds away—while keeping you close to Scottsdale's famous dining, shopping, culture and outdoor experiences.

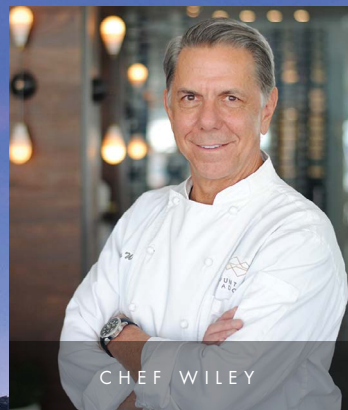
HEARTH '61

MODERN AMERICAN CUISINE

FOUNDED ON FLAVOR

Hearth '61 serves seasonal American fare that is rich in tradition. We embody the notion of authentic, honest cuisine and cook from the heart in our stunning exhibition kitchen.

Renowned Chef Charles Wiley takes his inspiration from the beautiful flavors of local and organic ingredients, crafting food that is delightful in its simplicity.

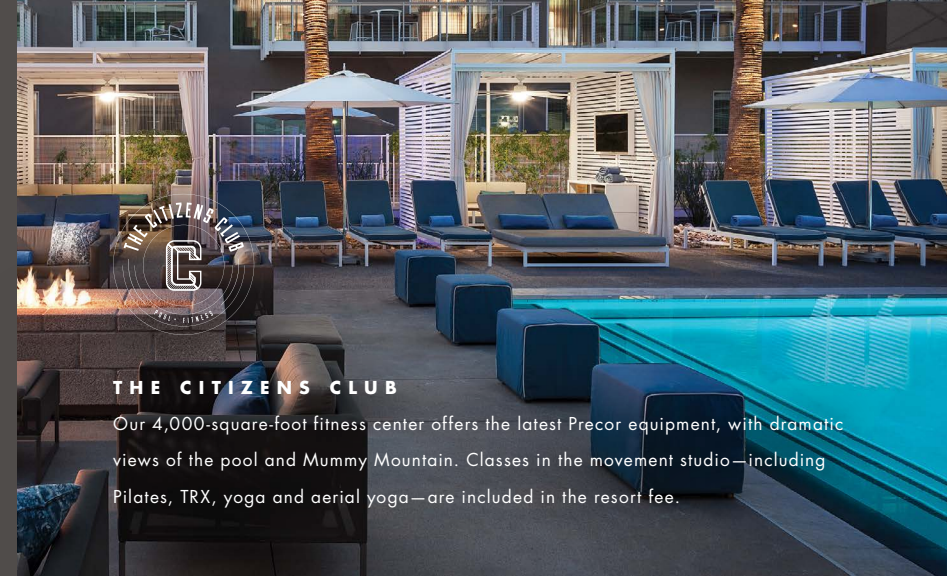


CHEF WILEY



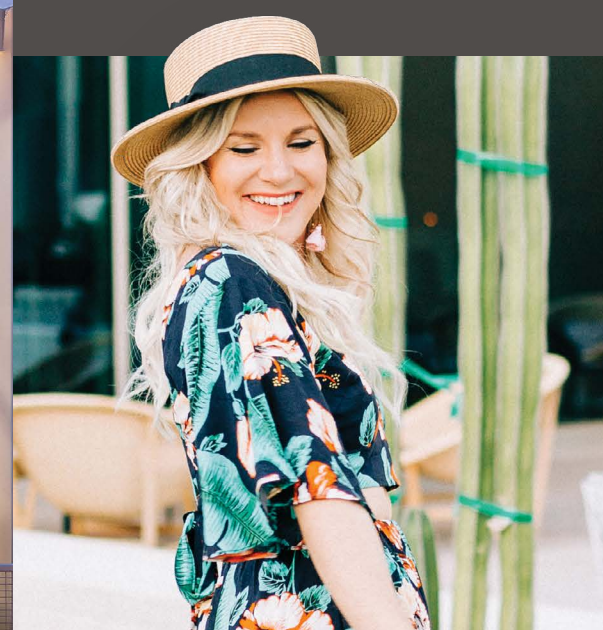
PV MERCANTILE

Browse fashion-forward, local products that represent the Paradise Valley lifestyle. Each piece is thoughtfully designed and made with the highest quality.



THE CITIZENS CLUB

Our 4,000-square-foot fitness center offers the latest Precor equipment, with dramatic views of the pool and Mummy Mountain. Classes in the movement studio—including Pilates, TRX, yoga and aerial yoga—are included in the resort fee.



THE SHORT COURSE

Treat your guests to our par-3, 18-hole course, which was recently named "Renovation of the Year" by *Golf Inc.* It features challenging greens, rugged slopes, distinct holes and unparalleled views. After your round, sample delicious food and drinks at Rusty's. The resort fee includes complimentary rentals of PING clubs and preferred tee times, making this round easy to swing.



Walks, bikes & hikes

Whether you're looking to stretch your legs or enjoy an intense workout, Paradise Valley's natural landscape is perfect for outdoor recreation. Meander along paved sidewalks and revel in the town's beautiful scenery and inspired design. Coast along the peaceful suburban streets on your bike, then hike up Camelback Mountain to take in breathtaking views of Phoenix.

The resort is set near some of Arizona's most celebrated trails. Phoenix Mountain Preserve area, just 10 minutes away, offers more than 50 miles of hiking and mountain biking trails. Or enjoy a complimentary ride in our Tesla Model X to Camelback Mountain and make your way to the summit for dramatic city views.



Added excitement

AREA GROUP ACTIVITIES

Our group tour partners make it easy to explore everything Arizona has to offer outside of the resort.



FLIGHT OF YOUR LIFE - AEROBATIC SUPER RIDE

If you crave hardcore adventure, this is your opportunity to take it to the extreme. Fly a real aircraft hands-on under the guidance of an expert aerobatic instructor. The Super Ride delivers an experience to last a lifetime.

HORSEBACK RIDING

Immerse yourself in the natural beauty of Arizona's Sonoran Desert with a traditional cowboy trail ride. While on horseback, experienced wranglers point out the unique vegetation and wildlife.

4-WHEELIN' DESERT TOUR

This tour is a relaxing way to leave civilization behind and take in the "Real West." An expert guide will lead you on an off-road tour of the Sonoran Desert's rugged terrain, highlighting many species of cacti and wildlife in an open-air vehicle.

HUMMER TOUR

There's nothing quite like driving through the vast and rugged Sonoran Desert in total comfort, riding aboard America's most advanced 4x4 vehicle. An expert driver will take you on a true thrill ride while providing educational tidbits along the way.

BONDURANT SCHOOL OF DRIVING

The Bob Bondurant School of High-Performance Driving is the "Fastest 60 Acres in America." The only purpose-built facility of its kind, it boasts classrooms, garages, skills pads and specially designed racetracks. Take a short ground school, then get behind the wheel of high-performance sports vehicles.

Around town entertainment

Set in serene Paradise Valley, Mountain Shadows is a relaxing retreat that’s close to the best local spots in nearby Old Town Scottsdale and Phoenix. Explore the area’s renowned dining, shopping and nightlife, check out a local art museum, or get outdoors and see the desert up close.



OLD TOWN SCOTTSDALE

While this popular destination may be known as “The West’s Most Western Town,” there’s much more to the city than tumbleweeds and cowboys. Old Town Scottsdale, just ten minutes from Mountain Shadows, features many artful appointments, including large public installations, art galleries and museums. It is also home to world-class shopping, from Scottsdale Fashion Square to chic local boutiques.

Explore the area’s wine, coffee and beer trails on foot, the perfect way to master the local food and drink scene. Throughout the city, you’ll find nearly 1,000 delectable dining options of every shape and size that are sure to please your palate. Balance out your calorie indulgences with a hike in the McDowell Sonoran Preserve, a stunning area featuring 30,000 acres of pristine desert and more than 200 miles of trails.

PHOENIX

At the heart of the Valley, Phoenix is having its own cultural moment that’s definitely worth exploring. Check out downtown’s eclectic mix of gallery spaces, shops, food and street art. Visit the Biltmore area for top fashions and eateries from celebrated restaurateurs.

Feel like catching a game? Phoenix is home to every major professional sport, and Cactus League Spring Training returns each year to great fanfare. The city also offers one of the country’s best zoos, an immersive botanical garden and premier golf courses. If you prefer a more rugged approach, hike or bike the Phoenix Mountains Preserve, a scenic slice of Sonoran desert just ten minutes from Mountain Shadows.

Map it out

Nestled between Scottsdale and Phoenix, Paradise Valley offers convenient access to the best of both worlds. Downtown Scottsdale features vibrant nightlife, a wide range of eateries and a taste of Southwest traditions. Phoenix’s Biltmore area is host to designer shopping, while Arcadia is home to some of the Valley’s best up-and-coming bars and restaurants.

OFF THE MAP:

Carefree – 23 miles

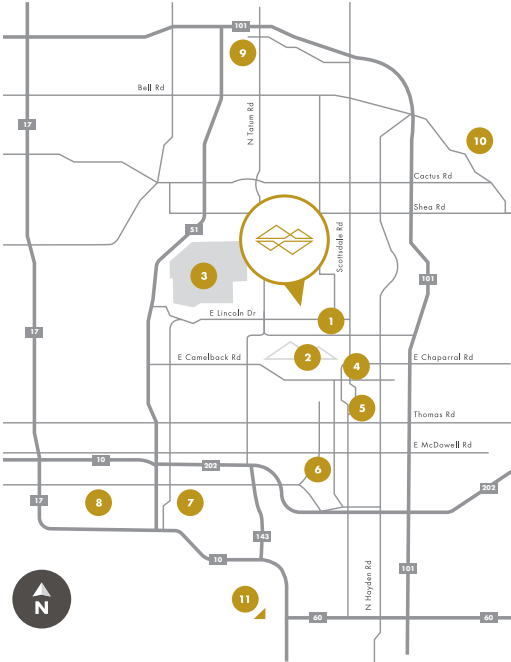
Cave Creek – 26 miles

Tucson – 116 miles

Sedona – 117 miles

Flagstaff – 146 miles

Grand Canyon – 225 miles



1. Sanctuary Camelback Mountain – 1 mile

2. Camelback Mountain Hiking – 1.5 miles

3. Phoenix Mountain Preserve Hiking & Biking (featuring over 50 miles of trails) – 3 miles

4. Fashion Square/Scottsdale Waterfront – 4 miles

5. Old Town/Downtown Scottsdale – 5 miles

6. Desert Botanical Garden – 8 miles

7. Phoenix Sky Harbor Airport – 9 miles

8. Downtown Phoenix – 10 miles

9. Musical Instrument Museum – 10 miles

10. Taliesin West – 13 miles

11. Bondurant School of High Performance Driving – 20 miles



MOUNTAINSHADOWS

I PREFER
HOTEL REWARDS

LVX
Residence
HOTELS & RESORTS



5445 EAST LINCOLN DRIVE, PARADISE VALLEY, AZ 85253

888.882.7516 | MOUNTAINSHADOWS.COM